

## **Model No.: HD-P011301**

### **10FEET SLAVE PALLET 96" SIDE LOADING**



## **Model No.: HD-P011301**

### **10FEET SLAVE PALLET 96" SIDE LOADING**

#### **FEATURES:**

- \*ULD to handle: LD1/LD3,LD8 container, or any container and pallet with the bottom size 125"x96", 125"x88"and 108"x88".
- \*96" side loading.
- \*Heavy duty 76mm dia. rollers.
- \*Lead-in rollers at the ends.
- \*Infills between rollers ensure operator's safety.
- \*Heavy duty frame with high quality steel and flux core MIG welding.
- \*Forklift pockets at four ends.
- \*Easy maintenance jobs.

#### **SPECIFICATION:**

- \*Overall dimensions (LxWxH): 3480mm x 2600mm x 200mm  
(Could be customized)
- \*Working flat dimensions(LxWxH): 3480mm x 2500mm x 167mm  
(Could be customized)
- \*Capacity: 7000kgs.
- \*Own Weight: 950kgs



[www.handlingyumbo.com](http://www.handlingyumbo.com)  
[info@handlingyumbo.com](mailto:info@handlingyumbo.com)

**Model No.: HD-P011302**  
**10FEET SLAVE PALLET 125" SIDE LOADING**



**Model No.: HD-P011302**  
**10FEET SLAVE PALLET 125" SIDE LOADING**

**FEATURES:**

- \*ULD to handle: LD8 container, or any container and pallet with the bottom size 125"x96", 125"x88" and 108"x88".
- \*125" side loading.
- \*Heavy duty 76mm dia. rollers.
- \*Infills between rollers ensure operator's safety.
- \*Heavy duty frame with high quality steel and flux core MIG welding.
- \*Forklift pockets at two 125" sides.
- \*Easy maintenance jobs.

**SPECIFICATION:**

- \*Overall dimensions (LxWxH): 3340mmx2596mmx170mm  
(Could be customized)
- \*Working flat dimensions(LxWxH): 3240mm x 2468mmx170mm  
(Could be customized)
- \*Capacity: 7000kgs.
- \*Weight: 950kgs

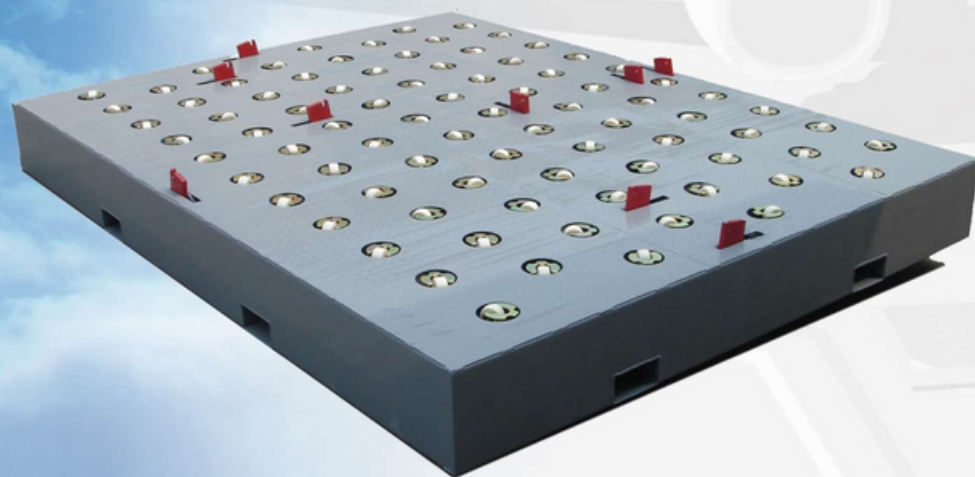
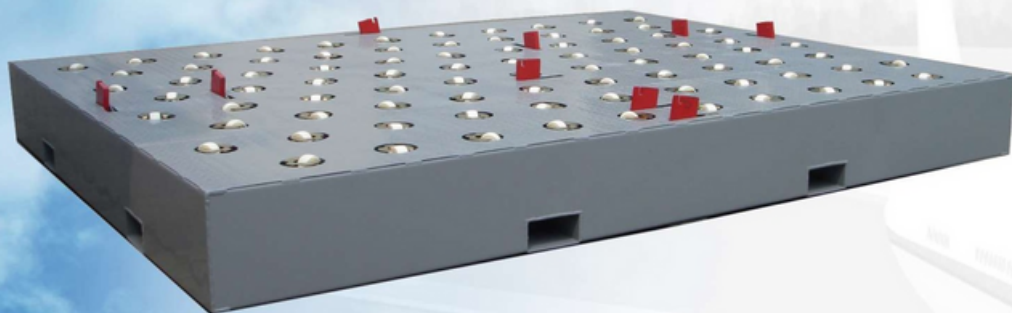


[www.handlingyumbo.com](http://www.handlingyumbo.com)  
[info@handlingyumbo.com](mailto:info@handlingyumbo.com)



## **Model No.: HD-P011303**

### **10FEET SLAVE PALLET SWIVEL CASTOR BED**



## **Model No.: HD-P011303**

### **10FEET SLAVE PALLET SWIVEL CASTOR BED**

#### **FEATURES:**

- \*ULD to handle: LD1/LD3, LD8 container, or any container and pallet with the bottom size 125"x96", 125"x88" and 108"x88".
- \*96" end or 125" side loading.
- \*Heavy duty swivel castor.
- \*Heavy duty frame with high quality steel and flux core MIG welding.
- \*Forklift pockets at four sides.
- \*Easy maintenance jobs.

#### **SPECIFICATION:**

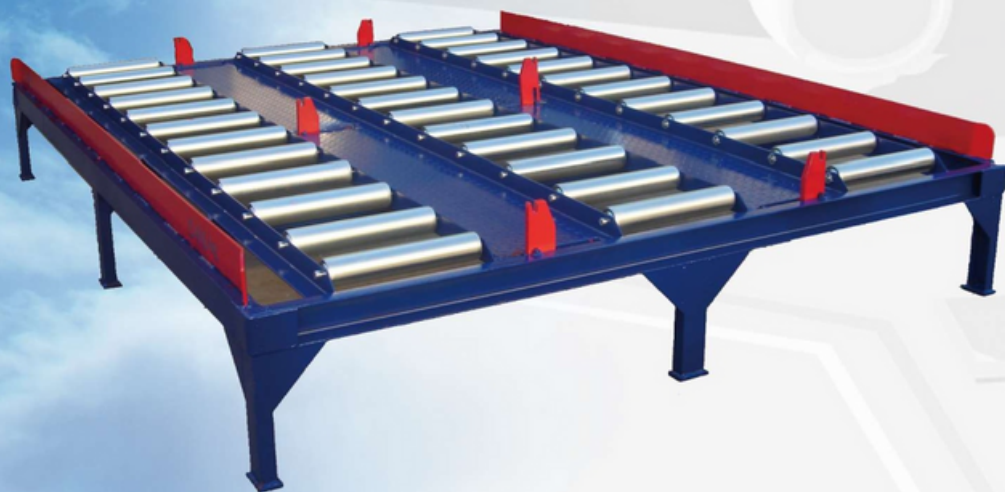
- \*Overall dimensions (LxWxH): 3400mmx2600mmx350mm  
(Could be customized)
- \*Working flat dimensions (LxWxH): 3400mmx2600mmx350mm  
(Could be customized)
- \*Capacity: 7000kgs.
- \*Weight: 700kgs



[www.handlingyumbo.com](http://www.handlingyumbo.com)  
[info@handlingyumbo.com](mailto:info@handlingyumbo.com)

## Model No.: HD-P011201

### 10FEET PALLET STORAGE RACK



## Model No.: HD-P011201

### 10FEET PALLET STORAGE RACK

#### FEATURES:

- \*ULD to handle:LD1/LD3, LD8 container,or any container and pallet with the bottom size 125"x96", 125"x88"and 108"x88".
- \*96" end loading.
- \*Adjustable support foot.
- \*Heavy duty 76mm dia roller.
- \*Heavy duty frame with high quality steel and flux core MIG welding.
- \*Easy maintenance jobs

#### SPECIFICATION:

- \*Overall dimensions (LxWxH): 3400mm x2580mm x572mm  
(Could be customized)
- \*Working flat dimensions(LxWxH): 3400mm x 2580mmx510mm  
(Could be customized)
- \*Capacity: 7000kgs.
- \*Weight: 750kgs



[www.handlingyumbo.com](http://www.handlingyumbo.com)  
[info@handlingyumbo.com](mailto:info@handlingyumbo.com)